

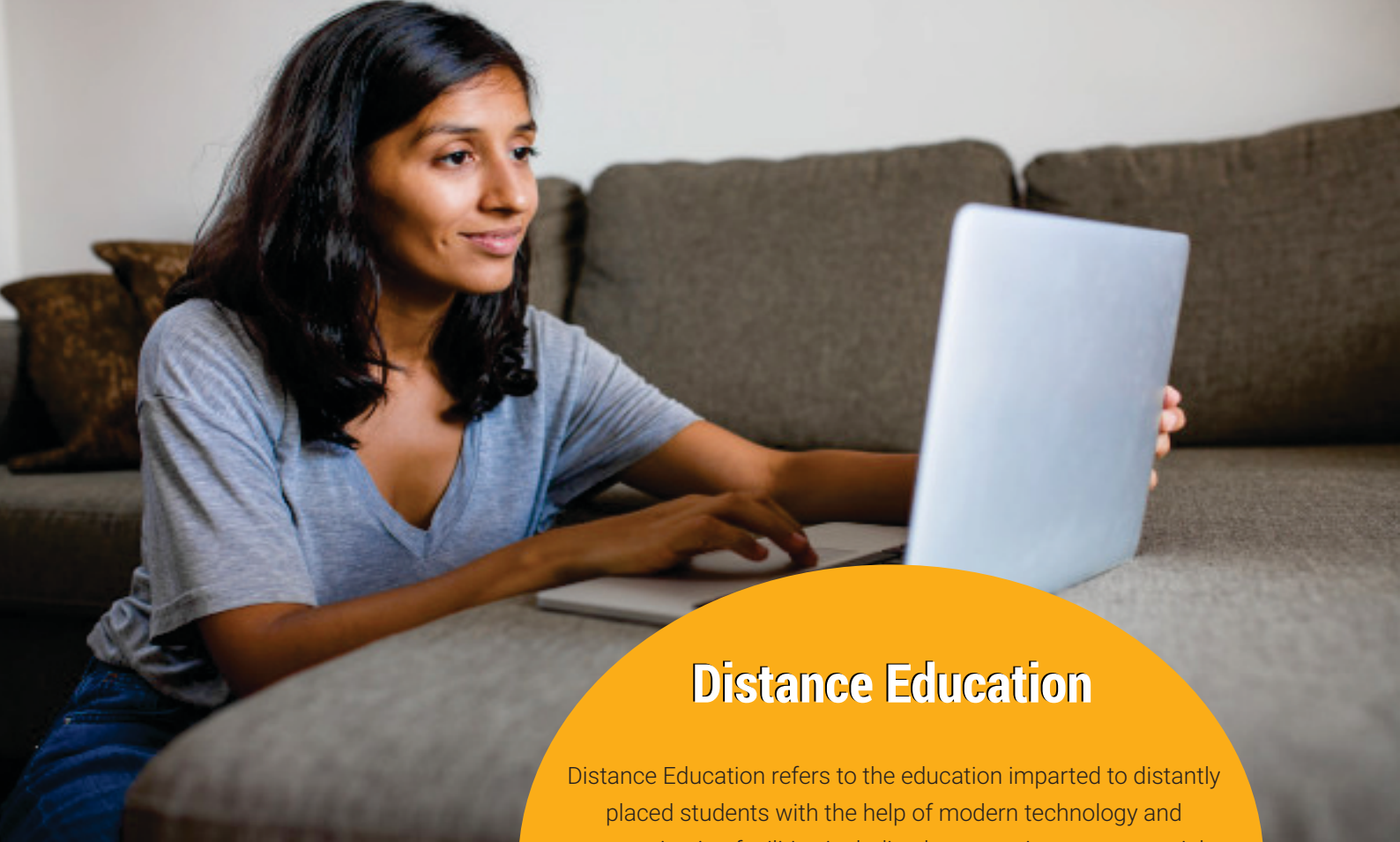


**KALINGA  
UNIVERSITY**

# Institute of Distance Education Kalinga University



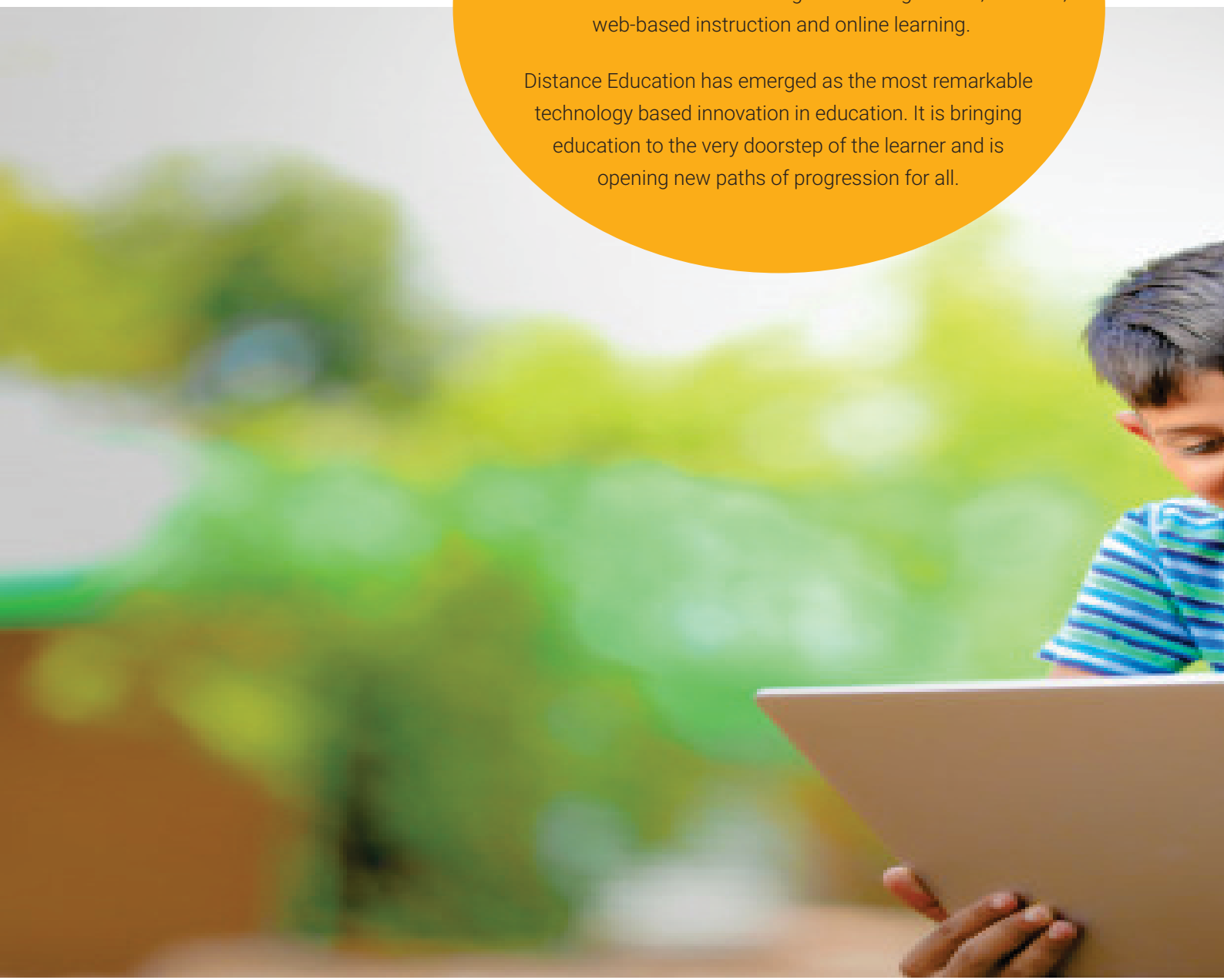




## Distance Education

Distance Education refers to the education imparted to distantly placed students with the help of modern technology and communication facilities including home assignments, tutorials, web-based instruction and online learning.

Distance Education has emerged as the most remarkable technology based innovation in education. It is bringing education to the very doorstep of the learner and is opening new paths of progression for all.



## Why IDE Kalinga University?



- All programs of Distance Education of Kalinga University are duly recognised by the University Grants Commission (UGC) and Distance Education Bureau (DEB).
- Distance Education is suitable for any applicant who is not able to attend the campus on a regular basis for some reason and wishes to pursue their further studies with keenness.
- This mode of education is suitable for economically weaker students, busy professionals as well as housewives who can pursue the distance education program for acquiring necessary skills at comparatively lower costs.
- Kalinga University provides opportunities to those who aspire to study while pursuing their career as well. Distance Education mode is also beneficial for candidates who wish to pursue their higher studies but do not have the time to do so.
- Kalinga University's Distance Education provides professional distance learning programs. Courses are offered in Commerce, management and Arts & Humanities Faculties and includes B.Com, BBA, B.A, DCA, PGDCA.
- Kalinga University provides the ease of registering for Distance Education in On-line mode as well as Off-line mode. The University has made a Mobile Application for Student Management System.
- Along with Self Learning Materials (SLM) the students will have access to the largest Online/Digital Library in Central India including National Digital Library (NDL), Developing Library Network (DELNET) and National Programme on Technology Enhanced Learning (NPTEL). Students will also be provided with Online Academic Assistance.



## Courses Offered Under IDE

Serial Number	Name of Course	Eligibility	Tenure		Mode
			Sem	Year	
01.	Bachelor of Commerce (B. Com)	Candidates should have passed higher secondary examination (XII) from a recognized board or equivalent.	6	3	Sem
02.	Bachelor of Arts (BA)	Candidates should have passed higher secondary examination (XII) from a recognized board or equivalent.	6	3	Sem
03.	Bachelor of Business Administration (BBA)	Candidates should have passed higher secondary examination (XII) from a recognized board or equivalent.	6	3	Sem
04.	Diploma in Computer Applications (DCA)	Candidates should have passed higher secondary examination (XII) from a recognized board or equivalent.	2	1	Sem
05.	Post Graduate Diploma in Computer Applications (PGDCA)	Graduate from a recognized University	2	1	Sem

- SLM soft copy is included in above fees. In case a student needs hard copy of the study learning material then he /she needs to pay INR 1000/- per semester.

UGC - DEB Approved Distance Programs. | Member of the Association of Indian Universities (AIU) | Working professionals in Government & Private Jobs can apply. | Regular mode students can also apply for parallel degree. | Valid programs for Centre and State Government Jobs. | Choose between On Line and Off Line Study Material. | PCP Pattern Choice - Weekends or 15 Days at the end of the semester. | Semester Mode Programs. | Learn at your own pace with Audio Video Lectures. | On Line Chat Support. | Suitable for students who cannot attend regular classes. | Additional Learning through Mobile App and Website. | Cost Effective. | Ease of Learning through On Line Content. | No Age Bar.

**Call: 9137954770**

**Address : 504,Spaces 912, above Brand Factory, Pleasant Park, Mira Bhayandar, Maharashtra 401107**